

NEW EXPEDITIONS.

Pennines.

DENTS DES BOUQUETINS, TRAVERSE OF S. PEAK (3,690 m. = 12,107 ft.).—On August 12, 1909, Messieurs Beilby Eric Smith and Gerald Hyde Villiers, accompanied by the guides Pierre Maurys and Jean Maître of Evolène, left the Hôtel du Mont Collon, Arolla, at 2 A.M. and ascended to near the top of the Upper Arolla Glacier, whence by a narrow and very steep snow cheminée and rocks, in bad condition, crumbling and encumbered with masses of loose stones, they reached at 10 A.M. the col separating the central and southern groups of these peaks. They continued along the arête leading to the S. summit and from 10 A.M. till 7 P.M. enjoyed some of the most exciting and delightful climbing it is possible to imagine. One after another the gendarmes were climbed and a little cairn built on the top of the principal ones; whilst on the last gendarme before the S. peak a bottle was left containing the names and the date. The summit of the S. peak was reached at about 3.30 P.M.

From the summit they continued along the arête up and down some more gendarmes till they were confronted by a sheer drop of 50 ft., which was descended by means of a spare rope and pitons (7 P.M.). At 9.15 P.M. it was pitch dark, and they were compelled to bivouac. Luckily the weather was fine, but the cold was intense. It was not light enough to start again till 4.30 A.M. when 2 hours of steep loose rock and a snow couloir brought them to the glacier, and in another two hours they were at the hotel.

[The arête followed from the col between the central and southern groups to the summit of the S. peak and down its S. arête as far as the 'sheer drop,' reached at 7 P.M., appears to be 'new,' except that Mr. A. G. Topham, when making the first ascent of the S. peak (locally known as the Aiguille du Midi), on July 18, 1894, reached from the E. the arête at a point N. of the S. peak, and followed this arête for $\frac{3}{4}$ hr. to the summit of the S. peak, thus covering a small part of the route now described.

Cf. 'A. J.' xvii. p. 254 for his note of first ascent; also a very instructive article in 'A. J.' xx. p. 113, with an illustration on which Mr. Topham's route is marked.

Cf. also 'A. J.' xxiii, illustration facing p. 532. The S. group is on the extreme right, the line of ascent to the col between the central and S. groups and the arête leading over the S. summit to the 'sheer drop' are well seen. Mr. Topham had twice previously reached this 'sheer drop' from the S. or lower side, but had failed to overcome it. There is also an outline of the chain in 'A. J.' xiii, opposite p. 529.]

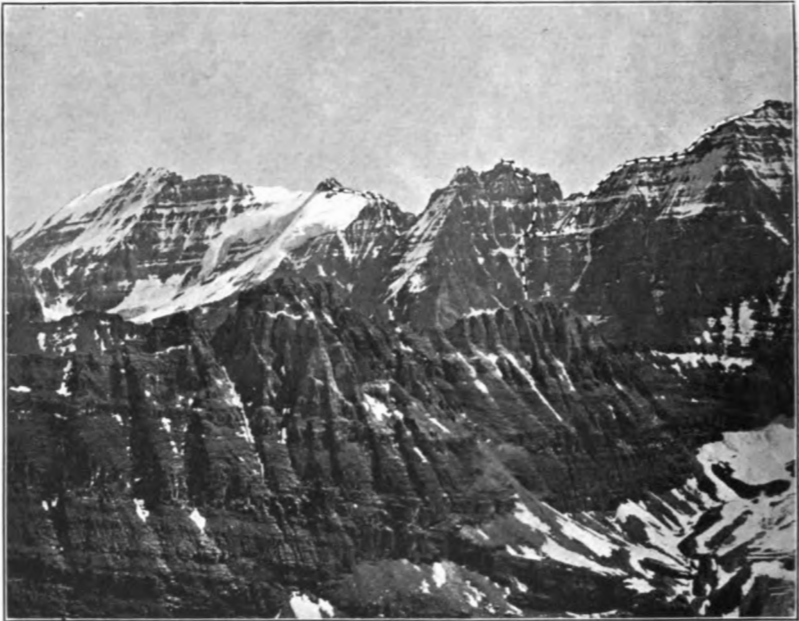
Dolomites.

THE NORTH FACE OF THE KLEINE ZINNE (2,881 m. = 9,450 ft.)—A new route was made up this face, on August 16, by Herr Rudolf



Swan Electric Engraving Co., Ltd.

FROM PARK PEAK—HUNGABEE (with route indicated; the dotted line is the first attempt)
AND BIDDLE.



Swan Electric Engraving Co., Ltd.

FROM PARK PEAK—LEFROY, GLACIER PEAK (with route indicated), RINGROSE (with route indicated),
AND PART OF HUNGABEE (with suggested route).

Fehrmann and Mr. Oliver Perry-Smith. The climb is fully described in 'Ö.A.Z.,' 1909, No. 798. The time taken for the ascent from the foot of the rocks was 4½ hrs. and the technical difficulties are described as the greatest either of the climbers had ever met with in the Alps, but as not reaching 'the extreme limit' of difficulty.

The new route lies to the W. of the regular N. face series of chimneys, and is well seen in the picture 'Zeitschrift,' 1908, p. 348.

Canadian Rocky Mountains.

RINGROSE (about 10,800 ft.).—On August 9, 1909, Mr. E. F. Pilkington and the writer made the first ascent of this peak. The S.W. face is well seen from Opabin Glacier. The mountain shows two summits, of which the southern one is the higher and the broader. To the south of the higher summit is seen a formidable looking gendarme on the main arête, which soon drops very suddenly to the lowest point of the arête between Ringrose and Hungabee. The S.W. face is reached by way of a broad snow-covered ledge, which sweeps up from the Opabin Glacier and runs north, rising in the direction of the col between Ringrose and the eastern peak of Mount Yukness. The characteristic features of the S.W. face are a first couloir descending from a point on the main ridge just south of the north summit, and a second couloir descending from a point just north of the gendarme. These two couloirs converge on a point at the foot of the face. A large patch of snow covers a fairly level platform in the line of the first couloir. A little above this and about half-way up the face is seen a horizontal but steep ledge; it is particularly well marked just under the lowest depression of the main arête. Another such ledge appears about the height of the said lowest depression.

Leaving the camp near Lake O'Hara at 4.45 A.M., a little lake at the foot of Opabin Glacier was reached at 5.55. Continuing at 6.10, the foot of the S.W. face was reached at 7.25. The face was attacked at 7.48 A.M., at a point immediately below the highest summit. The rocks present no difficulty and many variations are therefore possible, but a sharp look-out must be kept for falling stones.

The rib between the two couloirs mentioned above is followed, leaving the snow patch on the left—the first ledge being easily reached just where it crosses the second couloir. At this point and on the south side of the second couloir is seen a steep and curved gully partly filled with snow. It runs up in the direction of the lowest depression in the main arête, then turns back in the direction of the main summit. The rib which separates this curved gully from the second couloir seems to descend from the gendarme on the main arête. The second couloir looks very smooth and is certainly very dangerous. Crossing it very rapidly the rocks on its south side are reached and afford fine, safe climbing. The curved gully runs into a couloir filled with ice which descends from the south side of the gendarme. Crossing the curved gully at its junction with the ice couloir, the rocks on the north side of the latter are

followed, keeping high up and well out of harm's way until direct progress in the direction of the main arête becomes impossible without crossing the ice couloir. At this point an irregular vertical crack in a partly overhanging rock-wall affords a chance to reach the crest of the rib which seems to descend from the gendarme. This is the hardest part of the climb, for the rock is quite brittle. Once astride on the sharp rib it is seen that the second couloir, which is now immediately, on the left, divides a few feet higher into two branches—the one running to the very foot of the main peak, the other away from it. Either branch is practicable, but both are dangerous. Descending from the rib, the near branch of the second couloir is rapidly crossed when the main ridge can be reached by way of the buttress between the two branches. It is not until this buttress is reached that it becomes evident that that gendarme has been left on the right and that it will not stand in the way. The main arête is struck at the foot of what appears to be a vertical wall guarding the approach to the main peak from the south. This wall is, however, easily climbed (10.50 A.M.). Striding along the almost level arête in the direction of the highest point, one is suddenly brought up by the most perfect 'Gabel,' some 8 ft. wide and about 25 ft. deep, with perpendicular sides. The ridge at this point is flat topped and from 2 to 3 ft. wide. Both sides are perpendicular for some 30 or 40 ft.; in fact, the ridge looks exactly like a thick wall. Loose rocks enforce great care in negotiating the 'Gabel,' but this is the last difficulty, and the actual summit is reached immediately after (11.15 A.M.).

The same route was followed on the way down. Leaving the main summit at 12.5 P.M., the 'Gabel,' where a rope had been left, was passed at 12.15. After building a second cairn—south of the Gabel—the difficult crack was passed at 1.15, reaching the snow at the foot of the face at 2.45. Resting near the lake from 3.5 to 3.40, camp was reached at 4.45 P.M.

It is quite possible to traverse from the south to the north peak, and the north peak also seems accessible from the col between Ringrose and Yukness. We could not investigate further on that day, for we were due at Sherbrook Lake that night. The lowest depression in the main ridge between Ringrose and Hungabee, from where the latter can probably be climbed, can be reached from the lower of the two horizontal ledges of the S.W. face by a horizontal traverse to the south and a scramble up some easy rocks.

V. A. FYNN.

GLACIER PEAK (about 11,000 ft.).—On August 4, 1909, Messieurs C. A. Richardson, A. R. Hart, L. C. Wilson, all of the A.C.C., and the writer made the first ascent of this mountain. Leaving the camp at Lake O'Hara at 8.20 A.M., Lake Oesa was reached at 9.30 and ten minutes taken for a final survey of the peak. A direct attack is out of the question owing to two hanging glaciers which threaten the whole of the N.W. face. It is probably possible to scale the rocks immediately north of the hanging glacier nearest to Mount

Lefroy and thus reach the less steep upper slopes of this glacier, but these rocks appear to be frequently swept by falling stones, and afford practically no cover. The only other possible line of attack lies up a deeply cut, but not very steep, snow-filled couloir leading to a gap in the main ridge between Ringrose and Glacier Peak. This couloir is not threatened by either hanging glacier and affords an easy and tolerably safe means of attack. It is best to keep close to the very steep rock-walls on its north side; they afford good protection. Going up some screes and a small glacier, the bergschrund was soon reached and easily passed. From 11 to 11.20 was devoted to lunch in a protected spot well up in the couloir. At 12.15 came the first easy opportunity to take to the rocks on the north side; at this point, which is quite close to the gap, a broad ledge covered with loose stones runs horizontally into the couloir. A traverse north looks tempting but is not advisable. Near the main ridge and running nearly parallel to it is seen the mouth of a steep, narrow, and ice-filled couloir; keeping on its north side and as high up as practicable, fair progress is made over extremely rotten rocks requiring the greatest care. It soon becomes possible to reach the crest of the rib on the north side of said couloir; this affords much greater safety. The general line of ascent from this point is a rapidly rising one, bearing but slightly north. The main ridge was reached at 1.15 P.M. without special difficulty, and very soon afterwards the party stood at the foot of the peak itself, after having turned the last rocks of the main arête on the north over an ice slope covered with about $\frac{1}{2}$ in. of hard snow closely adhering to the ice. Traversing to the faintly marked S.W. ridge of the last peak, which looks like a pyramid of rock rising out of the snow and ice, the cornice-crowned summit was easily reached at 2 P.M. It is just possible that this peak can be reached from Paradise Valley. The upper parts of the east face appeared easy; it was, however, not possible to see the lower portions. Hungabee and Ringrose look very imposing from the summit, but still more so from the point where the main ridge was struck. Leaving the summit at 3 P.M., and following the same route at a leisurely pace, the top of the couloir was reached at 4.30, the bergschrund at 5.10, Oesa Lake at 5.35, and camp at 6.55 P.M.

V. A. FYNN.

VARIOUS EXPEDITIONS.

Maritime Alps.

ARGENTERA (3,317 m. = 10,883 ft.), TRAVERSE OF ALL THE PEAKS. —On September 4, 1908, Mr. C. F. Meade, with Pierre and Justin Blanc, left the Bagni di Valdieri at about 5.30 A.M., and in about 3 hours reached the foot of the great couloir.* This couloir is very

* Ball's *Western Alps*, Edition Coolidge, p. 11.